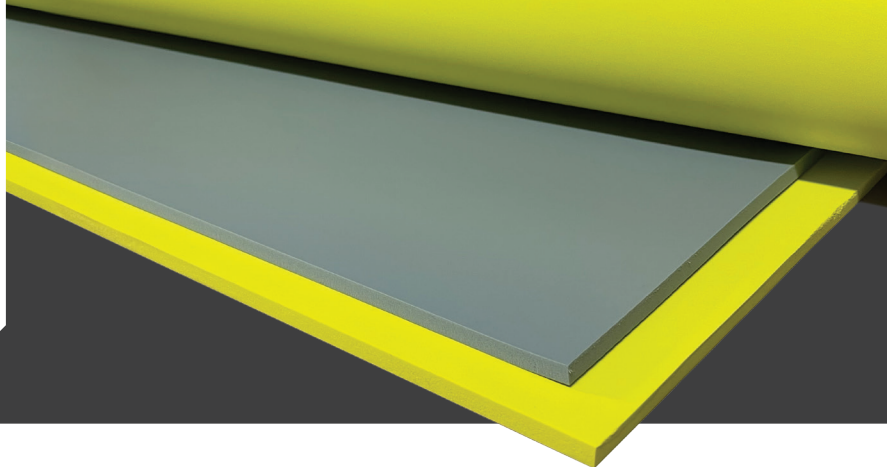


ADVANCED MARINE FOAM PADDING FOR BOAT DECKS**UNDER-CARPET APPLICATION**

Designed for life on the water, HydroCell™ is a revolutionary new under-carpet foam system engineered specifically for marine applications. Whether cruising, fishing, or relaxing dockside, HydroCell transforms your deck into a comfort-driven, high-performance surface—built to last for the lifetime of your boat.

**WHY HYDROCELL?**

- **Complete Rebound**
Recovers to full thickness even after millions of impressions, delivering long-term comfort and resilience.
- **Exceptional Compression Set Resistance**
Maintains cushioning and performance under constant foot traffic.
- **Water-Resistant Cellular Chemistry**
Blocks moisture absorption and resists mildew, mold, and rot.
- **Premium Footwear-Grade Foam Construction**
Provides a consistent feel and walkability—barefoot or in shoes.
- **Marine-Ready Design**
Installs between the fiberglass deck and carpet, adding comfort without altering deck height.

**TWO FORMULATIONS. ONE SUPERIOR EXPERIENCE.****HYDROCELL™ – COMFORT PRO*****Ultra-Cushioned. Soft Step.***

Ideal for luxury pontoon and leisure boats, Comfort Pro delivers a plush, responsive feel for all-day relaxation and barefoot comfort.

HYDROCELL™ – PERFORMANCE PRO***Firm Support. Athletic Feel.***

Tailored for fishing and active sport boats, Performance Pro offers a sturdy, grounded feel for enhanced footing and stability.

BUILT FOR THE MARINE INDUSTRY

- Saltwater-Resistant
- Mold & Mildew Resistant
- Easy to Cut & Install
- OEM & Aftermarket Compatible

HYDROCELL™: ELEVATE EVERY STEP.

Now available for OEM integration and marine flooring installers. Manufactured in Nashville, TN. Proudly Made in the USA.

Contact Us: 314-293-4193

Email: czone@zoneteamusa.com

Zone St. Louis (USA)

2025 S. Vandeventer Ave.
St. Louis, MO 63110

Phone: 314-773-2000

Zone Nashville (USA)

195 Polk Ave.
Nashville, TN 37210

Phone: 615-255-1775

Zone Ramos Arizpe (MEX)

Carretera los Pinos Km. 1.5, Col. La Teneria
Ramos Arizpe, Coahuila 25902

Phone: 844-488-0568



ADVANCED MARINE FOAM PADDING FOR BOAT DECKS

PRODUCT ATTRIBUTES:



True-to-Design Fit

Material structure resists compression set and returns to at least 98% of the original shape to maintain fit and cushioning



Resilience

Energy from each step is applied to the next for an energyactivated cushioning response



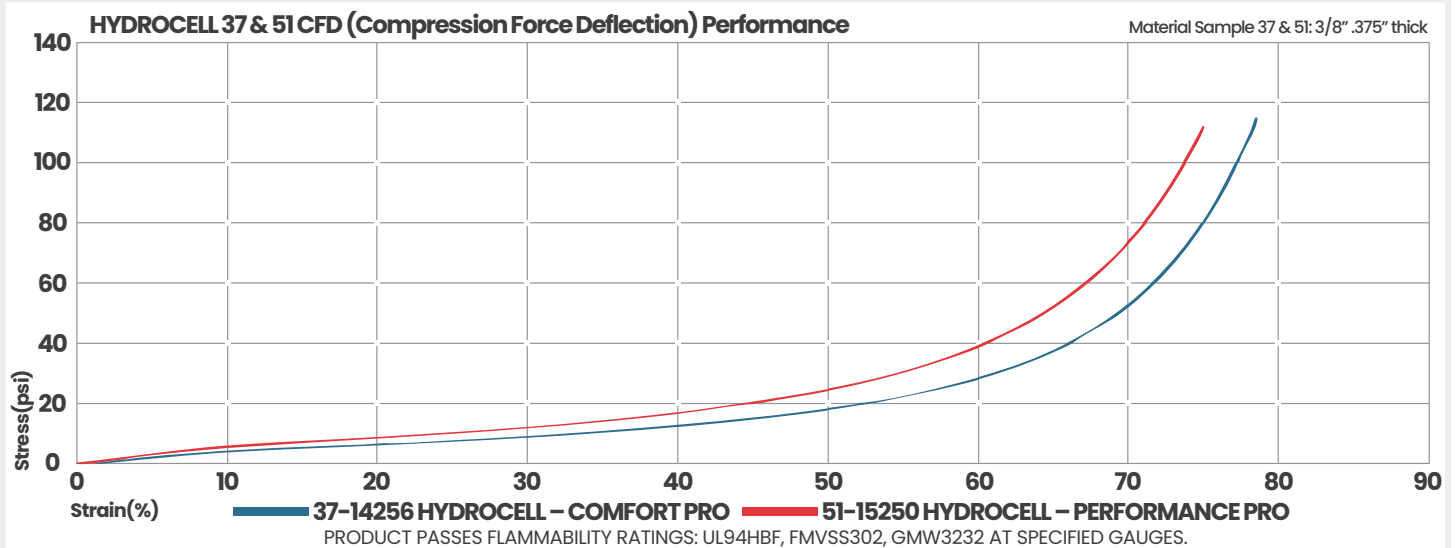
Load-Bearing Support

Consistent compression force deflection evenly distributes weight to support key pressure points and reduce discomfort



Shock Absorption

Helps prevent fatigue from repeated step shock by reducing energy transfer to joints and muscles



MATERIAL	PROPERTY	THICKNESS MM (INCH)	DENSITY kg/m ³ (lb/ft ³)	COMPRESSION FORCE DEFLECTION kPa (psi)	TENSILE STRENGTH (min) kPa (psi)	TENSILE ELONGATION (% MIN)	TEAR STRENGTH (min) kN/m (pli)	COMPRESSION SET %
COMFORT PRO	TYPICAL RESULT	6.5 (0.256)	240 (15)	48 (7)	248 (36)	150	0.96 (5.5)	<10
PERFORMANCE PRO		6.35 (0.250)	240 (15)	69 (10)	517 (75)	100	1.4 (8)	<10
	TEST METHOD	—	ASTM D 3574 TEST A	BASED ON ASTM D 1056; 25% Deflection, 0.5) cm/min (0.2"/min) strain	ASTM D 3574 TEST	TEST E	ASTM D 3574 TEST E	ASTM D 3574 TEST D at 70°C (158°F)

Notes: All metric conversions are approximate; typical values should not be used for specification limits.

Zone St. Louis (USA)

2025 S. Vandeventer Ave.
St. Louis, MO 63110

Phone: 314-773-2000

Zone Nashville (USA)

195 Polk Ave.
Nashville, TN 37210

Phone: 615-255-1775

Zone Ramos Arizpe (MEX)

Carretera los Pinos Km. 1.5, Col. La Teneria
Ramos Arizpe, Coahuila 25902

Phone: 844-488-0568

